

**ANNUAL REPORT
ON POWER FLOWS IN THE TRANSMISSION SYSTEM
OF BOSNIA AND HERZEGOVINA IN 2013**

Sarajevo, March 2014

This Report presents power flows in the transmission system in B&H for 2013. It includes main review of power flows and specific indicators and their comparison with the previous year.

Electricity balance in the transmission system

Total amount of 18.937 GWh of electricity was available on the transmission network of B&H in 2013. It was produced 15.712 GWh and another 58 GWh of electricity is injected from distribution networks. From the neighbouring systems it was received 3.167 GWh of electricity.

Out of totally available electricity on transmission network, distribution companies took over 9.215 GWh, customers directly connected to the transmission system took over 2.517 GWh, neighbouring systems were delivered with 6.862 GWh, while transmission losses amounted 343 GWh, which makes 1,84% of totally available electricity on transmission network. During 2013, the only reversible HPP in B&H PSHPP Čapljina hasn't worked in the pumping mode.

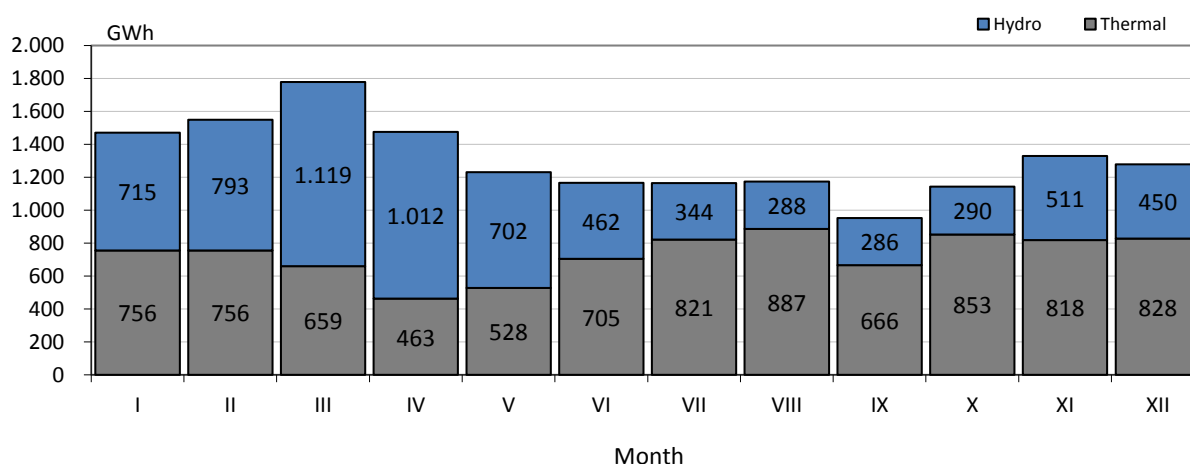
Electricity consumption in B&H in 2013 was for 1% smaller then consumption in 2012. Surplus of 28,4% of electricity produced in 2013 compared to 2012 was exported beyond the boundaries of B&H.

Electricity generation in the transmission system

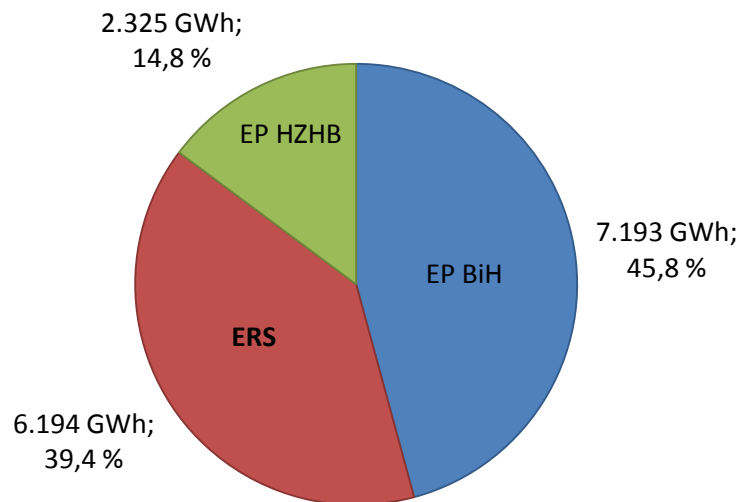
Out of totally produced 15.712 GWh of electricity in transmission system in 2013, Hydro Power Plants produced 6.971 GWh, i.e. 44,4%, and Thermal Power Plants produced 8.740 GWh, i.e. 55,6%. Good hydrological conditions in comparison to year 2012 caused 83,1% more generation in HPP. TPP produced 3,7% more energy compared to previous year so that, generally, it was produced 28,4% more energy than in 2012.

The following diagrams show the structure of electricity generation through months for 2013 from facilities directly connected to transmission network of B&H as well as the generation companies' contribution in electricity generation in B&H.

Monthly overview of the net generation mix in 2013



Companies' shares in the electricity generation

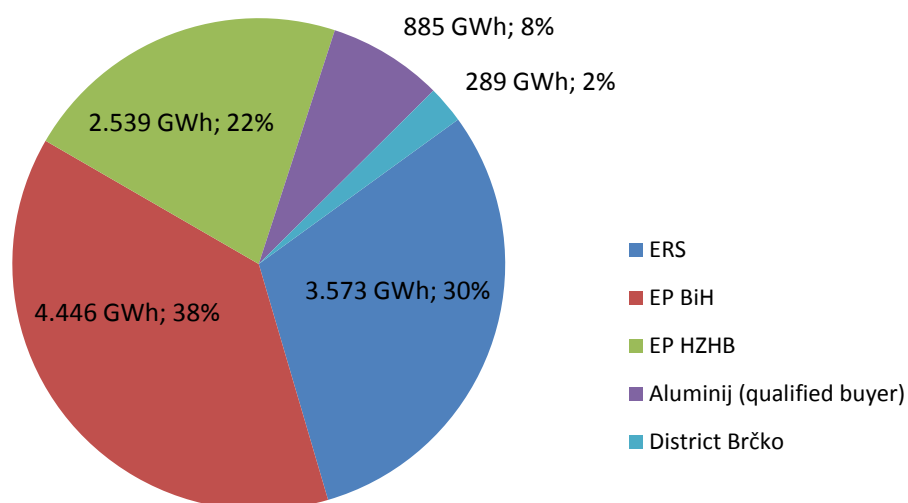


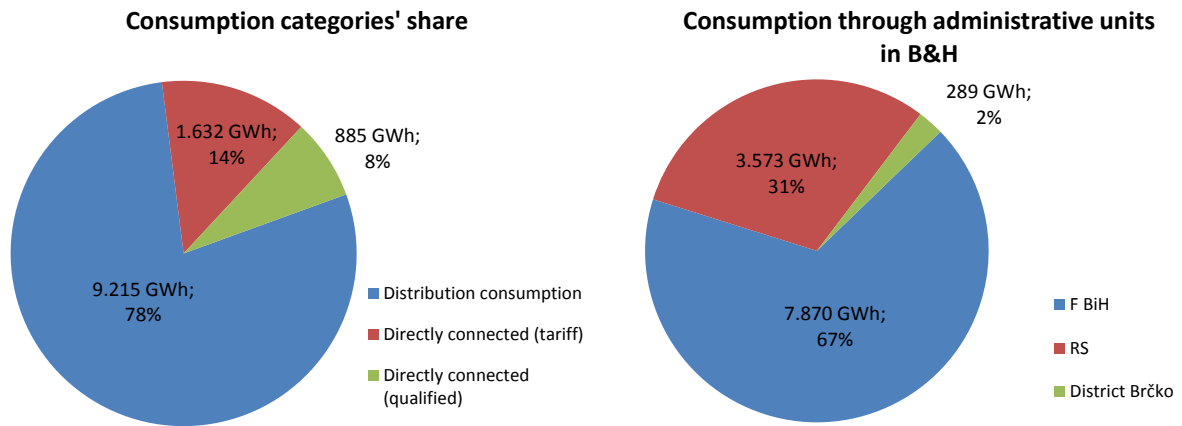
Electricity consumption in the transmission system

Electricity consumption in the transmission system of B&H in 2013 amounted 11.731 GWh and was 1% smaller in comparison to 2012. PSHHP Čapljina has not been working in pumping regime during 2013. Distribution companies took over 9.215 GWh and customers directly connected to the transmission network took over 2.517 GWh of electricity. Out of that amount, Aluminium combine, as a qualified buyer, took over 885 GWh of electricity, which made 7,54% of overall electricity consumption on the transmission network of B&H.

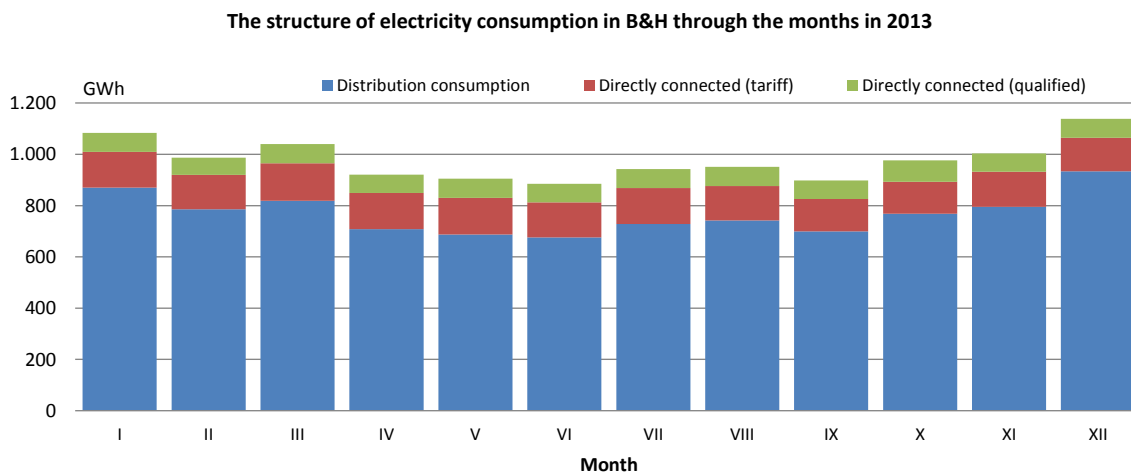
The following diagrams show licensed companies' consumption as well as the structure of consumption regarding consumption categories and administrative units in B&H.

Electrical consumption in B&H in 2013 - transmission network



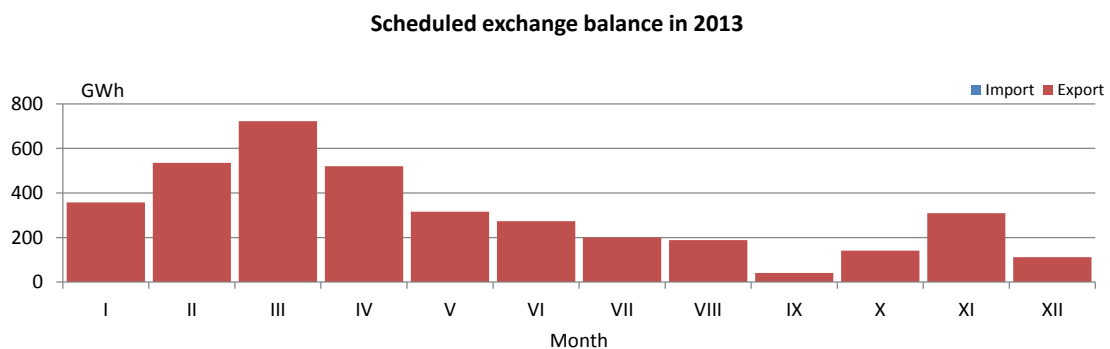


The highest monthly consumption of 1.139 GWh on the transmission level in B&H in 2013 was measured in December 2013. The smallest monthly consumption was in June amounting 885 GWh of electricity. The following diagram shows monthly consumptions in the transmission system in B&H.



Nominated power exchange with the neighbouring systems

According to the nominated exchange programmes, 2.527 GWh of electricity was imported and 6.242 GWh was exported from the power system of B&H during 2013. Out of that amount, 1.145 GWh of electricity was transited over the B&H transmission network. The balance out of 3.715 GWh exported energy is a significant increase compared to 33 GWh of electricity exported in 2012.



Crossborder power flows

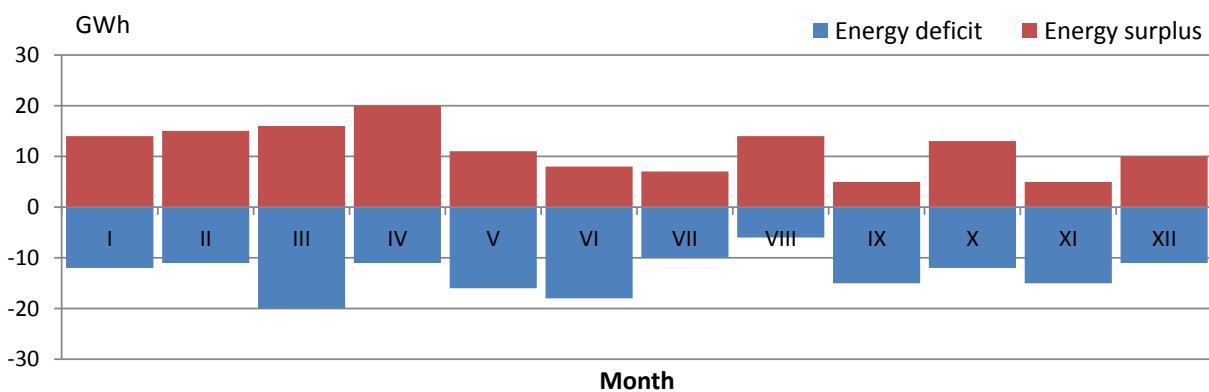
Physical power flows on tie-lines in 2013 provide the balance of B&H Control Area in amount of 3.695 GWh exported energy. 3.167 GWh was injected and, at the same time, 6.862 GWh was delivered to neighbouring systems during 2013. The following figure shows power flows on different borders in 2013.



Deviations from the nominated exchange programmes

Unintentional deviations from the nominated exchange programmes in 2013 were 158 GWh for the hours when there was deficit registered and 138 GWh for the hours when energy surplus is registered in B&H Control Area. Maximum hourly electricity deficit in amount of 226 MWh/h was registered in April and electricity surplus of 275 MWh/h in February 2013.

Monthly overview of the unintentional deviations of CA B&H in 2013



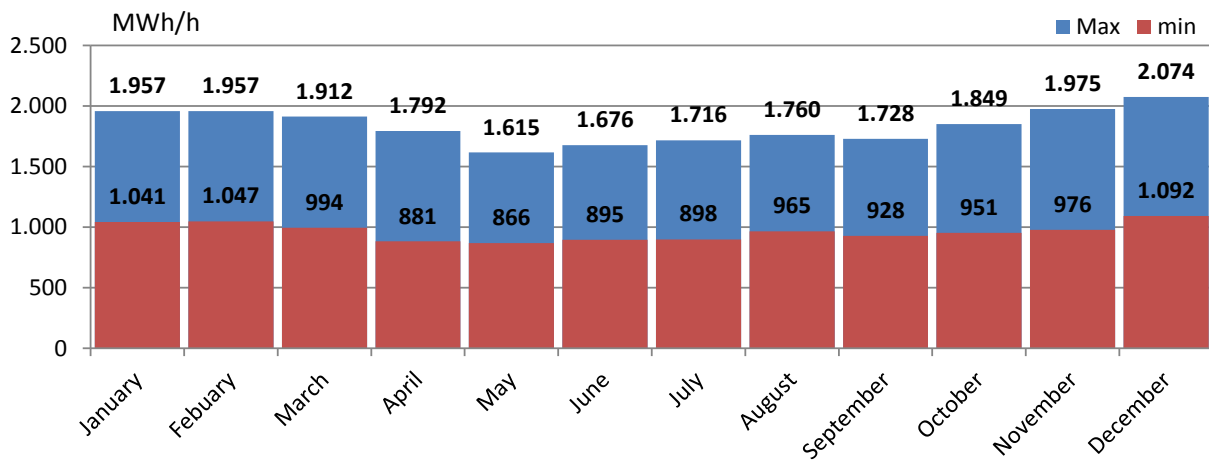
Specific values of hourly and daily consumption

Maximum hourly load in 2013 in amount of 2.074 MWh/h was realised on December 24th in 18th hour and is somewhat smaller in relation to the previous year. Maximum daily consumption in amount of 40.599 MWh of electricity was realised on December 24th, too. Minimum hourly load in amount of 866 MWh is registered on May 2nd in the 6th hour and smallest daily consumption in amount of 27.458 MWh on May 1st, 2013 (Labour Day).

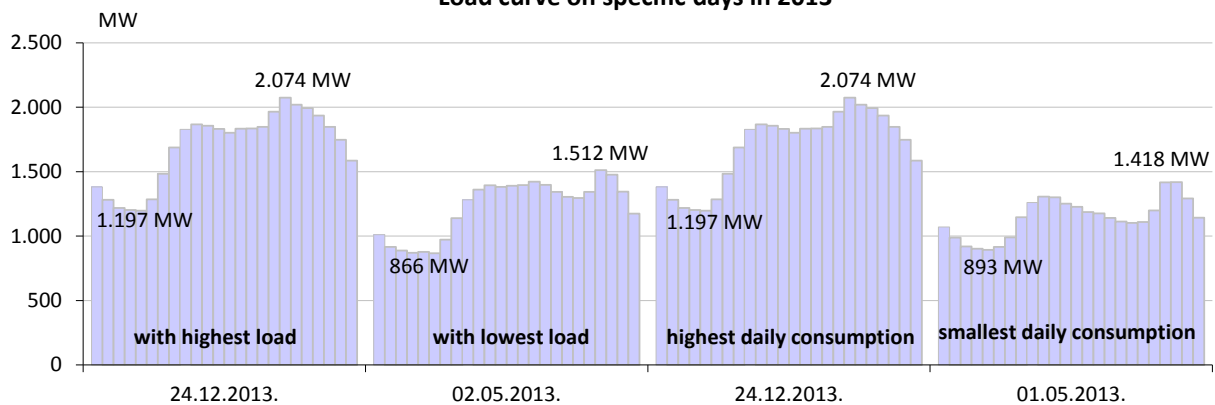
Specific values of electricity load in 2013

Highest load			Lowest load			Max daily consumption		Min daily consumption	
MWh	Day	Hour	MWh	Day	Hour	MWh	Day	MWh	Day
2.074	24.12.2013.	6:00 PM	866	02.05.2013.	6:00 AM	40.599	24.12.2013.	27.458	01.05.2013.

Monthly overview of the highest and lowest load in 2013



Load curve on specific days in 2013



ELECTRICITY BALANCE FOR THE B&H TRANSMISSION SYSTEM IN 2013

	I	II	III	IV	V	VI	VII	VIII	IX	X	XI	XII	2013/2012	
	GWh	GWh	GWh	GWh	GWh	GWh	GWh	GWh	GWh	GWh	GWh	GWh	%	
Net generation														
(1) HPP	715.2	792.8	1.119.3	1.012.2	702.3	461.6	343.6	287.6	285.5	289.9	511.0	450.4	6.971.3	183.1%
(2) TPP	755.6	756.0	659.4	463.1	527.8	705.2	821.1	886.9	666.2	853.0	817.8	828.1	8.740.2	103.7%
(3) Generation TOTAL (1+2)	1.470.9	1.548.8	1.778.7	1.475.3	1.230.1	1.166.9	1.164.7	1.174.4	951.7	1.142.9	1.328.8	1.278.4	15.711.5	128.4%
(4) received from the distribution system	5.9	8.6	12.0	12.6	8.3	4.4	1.3	0.6	0.8	0.9	2.3	0.7	58.4	155.4%
Physical Inside Flows														
(5) Croatia	134.7	67.3	87.8	113.0	102.7	63.3	75.0	72.4	92.7	86.5	62.3	168.8	1.126.5	44.7%
(6) Serbia	103.3	77.3	45.5	28.0	48.3	76.8	188.0	181.1	221.4	191.7	174.3	188.1	1.523.9	91.3%
(7) Montenegro	34.7	31.6	31.4	72.7	100.8	64.3	35.5	31.2	22.3	26.7	47.5	17.9	516.5	176.7%
(8) Inside flows TOTAL (5-7)	272.7	176.1	164.8	213.7	251.8	204.4	298.5	284.7	336.4	304.8	284.1	374.8	3.166.9	70.7%
(9) AVAILABLE ENERGY (3+4+8)	1.749.4	1.733.5	1.955.5	1.701.6	1.490.2	1.375.7	1.464.5	1.459.7	1.289.0	1.448.6	1.615.2	1.653.9	18.936.8	105.9%
Consumption														
(10) Distribution companies	870.2	786.1	819.1	708.1	687.2	676.1	727.9	742.3	699.6	768.7	795.6	933.9	9.214.8	99.7%
(11) Directly connected customers	213.7	201.2	220.7	213.1	217.5	208.7	214.6	208.7	198.1	207.6	208.2	204.9	2.517.2	96.6%
(12) Consumption TOTAL (10+11)	1.083.9	987.3	1.039.8	921.2	904.7	884.8	942.5	951.0	897.8	976.4	1.003.8	1.138.8	11.732.0	93.0%
Physical Outside Flows														
(13) Croatia	350.6	428.6	478.9	471.0	415.7	334.0	269.9	270.9	236.5	334.1	422.6	193.3	4.206.1	217.0%
(14) Serbia	53.6	43.7	73.2	113.0	68.2	41.6	22.5	16.2	23.5	23.6	29.5	29.1	537.7	120.0%
(15) Montenegro	228.4	243.4	330.7	159.2	78.3	91.7	203.8	194.6	107.0	87.7	131.0	262.2	2.118.0	99.0%
(16) Outside flows TOTAL (13-15)	632.5	715.7	882.8	743.2	562.2	467.4	496.3	481.7	366.9	445.4	583.0	484.6	6.861.7	151.6%
(17) Consumption of Pump	0.0	0.0	0.0	0.0	0.0	0.0	0.0	0.0	0.0	0.0	0.0	0.0	0.0	0.0%
(18) REQUIRED ENERGY (12+16+17)	1.716.4	1.703.0	1.922.5	1.664.4	1.466.9	1.352.2	1.438.8	1.432.7	1.264.7	1.421.8	1.586.8	1.623.4	18.593.7	105.9%
Transmission losses														
(19) Transmission losses (9+18)	33.0	30.4	33.0	37.2	23.4	23.5	25.7	27.0	24.3	26.8	28.4	30.5	343.1	111.3%
(20) In relation to the available energy (19)/(9)	1.89%	1.76%	1.69%	2.19%	1.57%	1.71%	1.75%	1.85%	1.88%	1.85%	1.76%	1.84%	1.81%	

* Including consumption of qualified buyers

NET GENERATION IN THE TRANSMISSION SYSTEM OF B&H IN 2013

GENERATION UNIT	I	II	III	IV	V	VI	VII	VIII	IX	X	XI	XII	2013	2013/12
	GWh	GWh	GWh	GWh	GWh	GWh	GWh	GWh	GWh	GWh	GWh	GWh	GWh	%
HPP Jablanica	90,2	93,7	114,9	111,6	102,9	75,9	45,4	32,3	40,8	64,8	74,2	55,1	901,6	163,3%
HPP Grabovica	39,0	34,0	52,0	58,8	39,3	27,4	15,7	11,1	14,4	23,8	28,7	20,9	364,9	170,1%
HPP Salakovac	64,5	51,7	93,8	102,4	66,1	42,2	18,2	10,8	16,2	35,0	47,8	27,3	576,0	187,2%
HPP Višegrad	110,1	122,0	187,5	199,7	187,4	112,5	55,6	38,4	19,9	44,1	75,0	63,7	1.216,0	141,7%
HPP Trebinje 1	81,7	92,9	122,2	97,7	53,6	23,9	43,5	48,6	41,7	21,4	30,8	42,2	700,3	270,6%
HPP Trebinje 2	0,0	0,0	0,0	0,0	0,0	0,0	0,0	0,0	0,0	0,0	0,0	0,0	0,0	
HPP Dubrovnik (G2)	0,0	14,0	74,4	74,8	73,3	34,0	60,0	63,5	67,5	5,6	72,0	81,8	621,0	313,8%
HPP Bočac	36,6	32,9	43,2	46,5	28,4	18,5	12,7	7,5	7,7	5,7	13,3	13,8	266,8	127,9%
HPP Rama	38,4	50,6	57,0	57,0	57,9	56,7	57,2	52,2	54,2	48,2	82,9	94,8	707,1	192,0%
HPP Mostar	30,8	28,9	39,1	40,3	35,8	24,0	12,9	8,8	11,9	21,3	27,8	17,6	299,3	152,9%
HPP Jajce 1	33,6	31,4	35,7	40,0	30,2	22,0	14,0	8,1	6,3	6,4	13,0	14,4	255,0	127,2%
HPP Jajce 2	10,4	9,5	11,1	10,7	10,4	7,9	5,5	4,3	3,9	4,2	5,3	5,4	88,6	119,3%
PS HPP Čapljina	151,7	187,6	225,1	115,3	1,6	2,9	1,1	1,6	0,6	4,8	19,5	1,1	712,9	247,5%
HPP Peć-Mlini	9,6	14,9	19,6	17,3	9,1	8,2	1,8	0,4	0,5	0,8	5,4	5,7	93,0	235,2%
HPP Mostarsko Blato*	18,8	28,8	43,6	40,1	6,2	5,6	0,1	0,0	0,0	3,8	15,2	6,5	168,8	381,2%
HPP TOTAL	715,2	792,8	1.119,3	1.012,2	702,3	461,6	343,6	287,6	285,5	289,9	511,0	450,4	6.971,3	183,1%
TPP Tuzla	184,4	261,4	250,9	217,9	224,0	211,8	245,9	289,7	256,9	385,8	323,3	265,8	3.117,8	115,1%
TPP Kakanj	258,2	206,6	131,3	96,4	80,4	197,0	249,7	268,2	256,6	106,9	172,3	208,7	2.232,3	90,5%
TPP Ugljevik	161,8	142,1	109,4	0,0	47,0	148,4	183,4	155,7	147,4	185,8	166,1	169,8	1.616,8	88,0%
TPP Gacko	151,3	145,9	167,9	148,7	176,4	148,1	142,1	173,3	5,3	174,4	156,1	183,9	1.773,3	125,4%
TPP TOTAL	755,6	756,0	659,4	463,1	527,8	705,2	821,1	886,9	666,2	853,0	817,8	828,1	8.740,2	103,7%
GENERATION TOTAL	1.470,9	1.548,8	1.778,7	1.475,3	1.230,1	1.166,9	1.164,7	1.174,4	951,7	1.142,9	1.328,8	1.278,4	15.711,5	128,4%

*Electricity produced in testing period

ELECTRICITY CONSUMPTION IN THE TRANSMISSION SYSTEM OF B&H IN 2013

CONSUMPTION	I	II	III	IV	V	VI	VII	VIII	IX	X	XI	XII	2013	2013/2012
	GWh	GWh	GWh	GWh	GWh	GWh	GWh	GWh	GWh	GWh	GWh	GWh	GWh	%
Elektrokrajina	176,6	161,7	165,9	140,0	133,8	128,8	135,2	133,4	129,6	147,6	157,9	185,8	1.796,3	99,4%
Elektrodoboj	54,5	49,6	50,1	51,1	47,5	45,9	51,6	50,4	48,0	49,9	52,7	58,8	610,1	100,3%
Elektrobjeljina	60,9	53,6	58,0	48,1	47,4	47,2	50,4	51,9	50,8	57,2	59,4	71,2	656,1	100,4%
Elektrodisribucija Pale	29,2	26,0	26,6	22,2	21,5	21,0	22,6	23,1	23,1	26,1	26,1	32,0	299,5	98,3%
Elektrohercegovina	17,7	17,5	18,0	13,4	14,9	15,0	16,5	17,0	15,6	16,0	17,0	20,5	199,3	102,3%
RTE ERS (Ugljevik i Gacko)	1,1	0,5	0,6	1,4	1,5	1,0	1,1	0,7	2,2	0,6	1,0	0,5	12,1	97,0%
ERS	340,0	309,0	319,2	276,2	266,6	258,9	277,4	276,4	269,5	297,3	314,1	368,8	3.573,5	99,8%
ED Sarajevo	131,3	117,9	121,8	104,7	100,6	98,7	105,4	105,9	103,9	115,5	121,4	144,8	1.372,0	101,3%
ED Tuzla	91,5	83,5	88,8	81,3	82,8	80,1	84,3	87,6	82,2	89,3	88,1	97,6	1.037,0	100,1%
ED Zenica	86,3	77,9	83,2	74,0	73,5	73,1	75,2	78,4	73,1	79,2	78,8	90,6	943,3	102,0%
ED Mostar	19,3	17,5	18,3	15,2	15,0	15,1	16,9	17,6	14,6	15,8	17,4	21,0	203,5	98,9%
ED Bihać	37,8	33,5	37,5	34,2	34,1	33,9	38,3	39,5	36,2	38,5	36,9	41,3	441,6	100,2%
Directly connected customers	37,0	38,4	38,4	36,4	36,8	39,3	40,1	36,3	29,7	36,6	43,6	36,1	448,6	99,9%
EPBH	403,2	368,6	388,0	345,7	342,8	340,1	360,3	365,3	339,5	374,9	386,2	431,5	4.446,1	100,8%
ED Hercegovacko-Neretvanska	51,8	45,6	47,5	36,2	33,5	34,7	39,3	41,9	34,6	36,3	39,9	51,5	492,7	95,7%
ED Zapadnohercegovačka	31,1	28,8	27,7	24,5	22,9	22,7	25,2	26,0	22,7	24,9	26,2	27,9	310,4	96,6%
ED Herceg Bosanska	14,1	12,3	13,2	11,4	11,3	10,6	11,8	12,3	10,9	11,9	12,1	14,1	145,9	96,7%
ED Srednja Bosna	27,6	24,8	24,9	20,9	21,3	22,6	26,7	27,9	26,8	28,8	27,4	32,5	312,2	96,1%
ED Posavska	9,7	8,5	9,6	8,6	7,9	7,8	8,6	9,0	7,9	8,7	8,8	10,9	106,1	97,0%
Directly connected customers	101,2	95,2	107,4	103,3	104,9	96,5	99,0	97,4	94,2	87,0	91,7	93,9	1.171,5	94,9%
EPHZHB	235,6	215,1	230,2	204,9	201,7	194,8	210,6	214,5	197,1	197,5	206,1	230,7	2.538,8	95,6%
Aluminij (qualified buyer)	74,4	67,2	74,3	72,0	74,4	72,0	74,4	74,4	72,0	83,4	72,0	74,4	884,9	97,2%
District Brčko	30,7	27,5	28,1	22,4	19,2	18,9	19,8	20,4	19,6	23,2	25,5	33,3	288,6	98,0%
Consumption TOTAL	1.083,9	987,3	1.039,8	921,2	904,7	884,8	942,5	951,0	897,8	976,4	1.003,8	1.138,8	11.732,0	99,0%
Consumption of PSHHP Čapljina	0,0	0,0	0,0	0,0	0,0	0,0	0,0	0,0	0,0	0,0	0,0	0,0	0,0	0,0%
Overall Takeover	1.083,9	987,3	1.039,8	921,2	904,7	884,8	942,5	951,0	897,8	976,4	1.003,8	1.138,8	11.732,0	98,4%

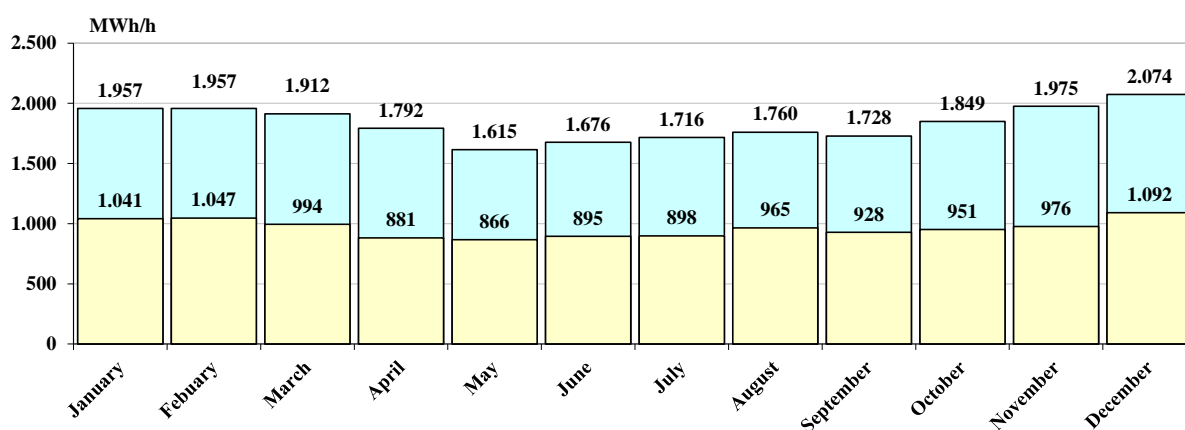
Specific data on hourly and daily consumption in 2013

Month	Max load (hourly)			Min load (hourly)			Max daily consumption		Min daily consumption	
	MWh/h	Day	Hour	MWh/h	Day	Hour	MWh	Day	MWh	Day
January	1.957	17.1.2013	18	1.041	21.1.2013	4	38.590	18.1.2013	34.579	1.1.2013
February	1.957	21.2.2013	19	1.047	27.2.2013	4	38.875	13.2.2013	34.849	3.2.2013
March	1.912	26.3.2013	20	994	10.3.2013	4	38.301	26.3.2013	32.054	10.3.2013
April	1.792	3.4.2013	21	881	22.4.2013	4	36.220	3.4.2013	29.314	28.4.2013
May	1.615	4.5.2013	21	866	2.5.2013	6	31.812	23.5.2013	27.458	1.5.2013
June	1.676	19.6.2013	15	895	30.6.2013	6	33.721	20.6.2013	28.888	30.6.2013
July	1.716	29.7.2013	15	898	1.7.2013	5	34.717	29.7.2013	29.525	7.7.2013
August	1.760	7.8.2013	22	965	26.8.2013	4	35.864	7.8.2013	30.244	25.8.2013
September	1.728	26.9.2013	20	928	9.9.2013	4	33.013	30.9.2013	30.096	8.9.2013
October	1.849	14.10.2013	20	951	28.10.2013	4	34.825	7.10.2013	32.165	20.10.2013
November	1.975	30.11.2013	18	976	4.11.2013	3	38.912	29.11.2013	32.122	3.11.2013
December	2.074	24.12.2013	18	1.092	27.12.2013	4	40.599	24.12.2013	36.690	29.12.2013
2013	2.074	24.12.2013	18	866	2.5.2013	6	40.599	24.12.2013	27.458	1.5.2013

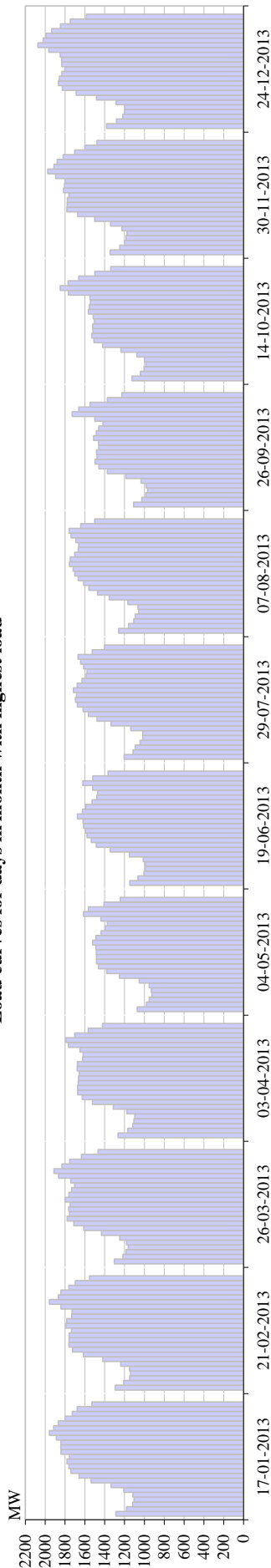
Specific values of electricity load in 2013

Highest load			Lowest load			Max daily consumption		Min daily consumption	
MWh	Day	Hour	MWh	Day	Hour	MWh	Day	MWh	Day
2.074	24.12.2013.	6:00 PM	866	02.05.2013.	6:00 AM	40.599	24.12.2013.	27.458	01.05.2013.

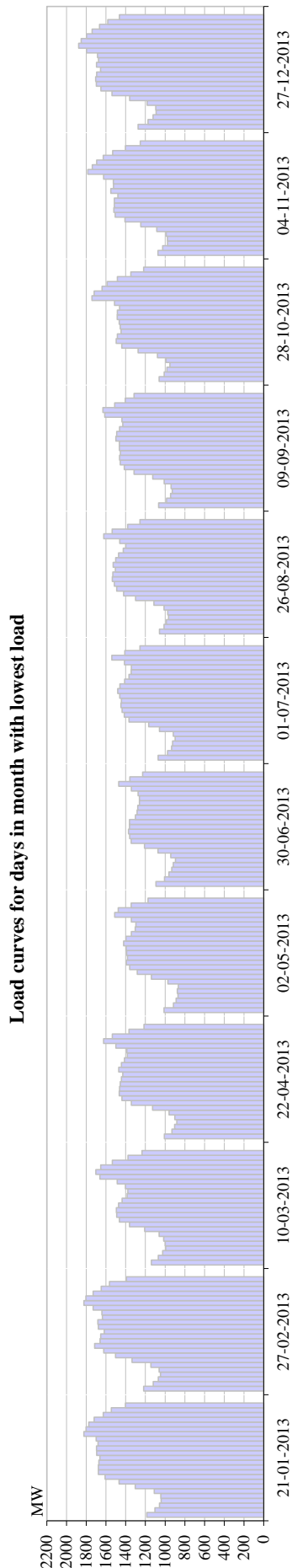
Monthly overview of the highest and lowest load in 2013



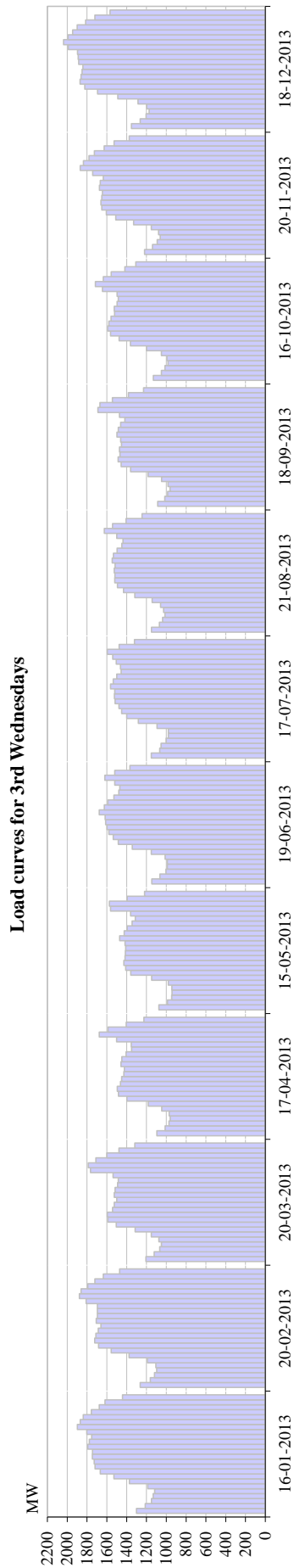
Load curves for days in month with highest load



	1	2	3	4	5	6	7	8	9	10	11	12	13	14	15	16	17	18	19	20	21	22	23	24	Σ
January	1288	1.181	1.117	1.104	1.115	1.208	1.336	1.537	1.658	1.740	1.762	1.780	1.756	1.841	1.843	1.842	1.887	1.957	1.915	1.869	1.800	1.727	1.677	1.529	38.469
February	1.295	1.210	1.147	1.139	1.149	1.239	1.419	1.615	1.723	1.761	1.760	1.759	1.735	1.792	1.784	1.732	1.728	1.842	1.957	1.868	1.842	1.761	1.696	1.553	38.506
March	1.303	1.217	1.186	1.163	1.181	1.249	1.434	1.611	1.711	1.779	1.755	1.763	1.748	1.797	1.762	1.734	1.703	1.743	1.865	1.912	1.831	1.753	1.634	1.467	38.301
April	1.266	1.169	1.117	1.105	1.097	1.177	1.314	1.523	1.626	1.672	1.674	1.667	1.664	1.655	1.678	1.675	1.623	1.617	1.650	1.767	1.792	1.703	1.566	1.423	36.220
May	1.072	978	951	922	930	951	1.053	1.251	1.380	1.462	1.482	1.483	1.485	1.490	1.520	1.489	1.436	1.395	1.374	1.438	1.615	1.565	1.407	1.243	31.372
June	1.146	1.064	1.004	989	990	1.011	1.151	1.344	1.485	1.536	1.579	1.598	1.612	1.618	1.676	1.625	1.590	1.528	1.479	1.470	1.521	1.621	1.520	1.367	33.524
July	1.204	1.114	1.092	1.044	1.016	1.016	1.138	1.335	1.478	1.564	1.617	1.675	1.695	1.685	1.716	1.678	1.630	1.587	1.578	1.613	1.644	1.669	1.526	1.403	34.717
August	1.260	1.160	1.106	1.091	1.058	1.064	1.167	1.354	1.473	1.559	1.613	1.667	1.702	1.718	1.756	1.748	1.704	1.668	1.663	1.692	1.739	1.760	1.641	1.501	35.864
September	1.109	1.026	986	967	983	1.034	1.187	1.374	1.458	1.497	1.477	1.482	1.461	1.463	1.511	1.485	1.461	1.417	1.499	1.728	1.662	1.548	1.374	1.227	32.416
October	1.126	1.040	1.002	985	999	1.076	1.237	1.421	1.508	1.530	1.518	1.520	1.503	1.517	1.564	1.556	1.544	1.549	1.766	1.849	1.769	1.662	1.500	1.340	34.081
November	1.346	1.248	1.202	1.185	1.175	1.226	1.341	1.501	1.672	1.782	1.778	1.776	1.761	1.816	1.806	1.801	1.895	1.975	1.911	1.878	1.819	1.704	1.601	1.478	38.676
December	1.381	1.282	1.217	1.201	1.197	1.284	1.483	1.687	1.828	1.867	1.857	1.832	1.802	1.833	1.835	1.848	1.965	2.074	2.020	1.993	1.935	1.847	1.747	1.585	40.599



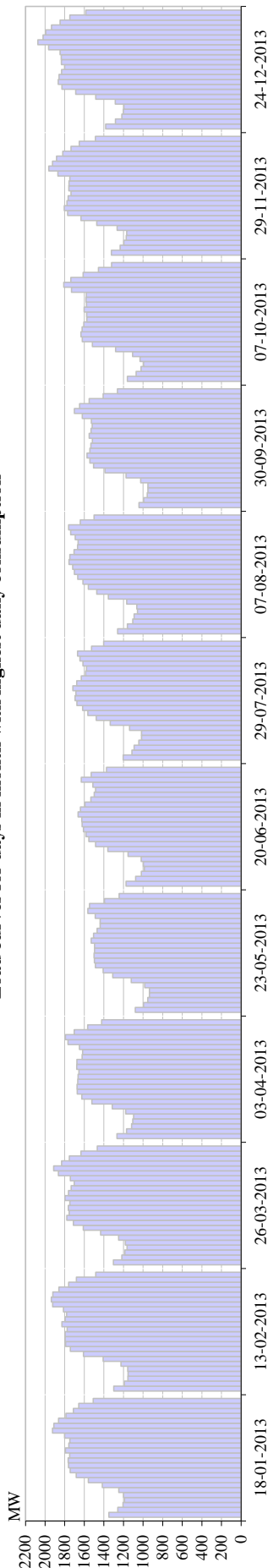
	1	2	3	4	5	6	7	8	9	10	11	12	13	14	15	16	17	18	19	20	21	22	23	24	Σ
January	1186	1104	1057	1041	1043	1110	1303	1467	1609	1677	1678	1673	1662	1694	1696	1681	1699	1825	1803	1775	1720	1628	1546	1403	36,080
February	1218	1120	1069	1047	1060	1145	1336	1504	1623	1716	1660	1654	1618	1677	1682	1637	1642	1730	1825	1804	1731	1648	1564	1393	36,103
March	1139	1069	1025	994	1000	1015	1061	1208	1362	1464	1492	1494	1472	1437	1386	1379	1403	1486	1663	1704	1654	1535	1377	1235	32,054
April	1007	931	903	881	902	960	1128	1342	1438	1465	1462	1456	1443	1430	1470	1443	1412	1383	1389	1500	1625	1536	1367	1215	31,088
May	1011	916	888	870	877	866	972	1139	1282	1360	1394	1382	1390	1396	1422	1398	1342	1304	1296	1342	1512	1476	1345	1174	29,354
June	1094	1006	962	932	917	895	942	1072	1210	1345	1360	1372	1362	1361	1302	1285	1278	1260	1260	1274	1343	1470	1358	1228	28,888
July	1071	976	935	924	898	917	1058	1167	1367	1415	1436	1449	1443	1461	1481	1458	1411	1367	1344	1343	1413	1541	1410	1256	30,541
August	1058	1011	988	965	973	1012	1114	1300	1422	1491	1515	1535	1530	1505	1528	1502	1473	1424	1399	1461	1623	1537	1381	1256	32,003
September	1065	985	944	928	939	1010	1126	1316	1415	1455	1462	1454	1464	1464	1500	1491	1462	1430	1438	1612	1632	1512	1404	1315	31,823
October	1061	1009	982	951	990	1077	1275	1440	1496	1485	1447	1456	1465	1487	1485	1463	1513	1742	1721	1640	1589	1484	1348	1218	32,824
November	1072	1025	976	977	988	1084	1247	1408	1507	1520	1515	1516	1479	1551	1524	1526	1625	1785	1738	1695	1627	1533	1403	1253	33,574
December	1275	1174	1121	1092	1094	1182	1360	1539	1652	1698	1705	1694	1656	1697	1676	1686	1798	1877	1852	1797	1742	1666	1582	1464	37,077



Load curves for 3rd Wednesdays

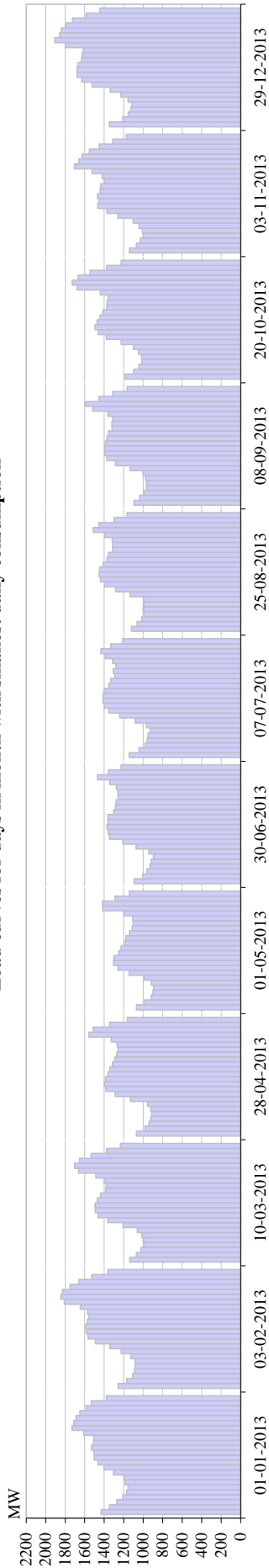
	1	2	3	4	5	6	7	8	9	10	11	12	13	14	15	16	17	18	19	20	21	22	23	24	Σ
January	1301	1212	1149	1132	1118	1187	1372	1528	1666	1719	1727	1746	1744	1793	1777	1753	1803	1898	1868	1839	1756	1676	1619	1442	37,825
February	1264	1162	1119	1097	1105	1191	1375	1556	1684	1723	1711	1687	1659	1708	1696	1696	1695	1810	1877	1861	1793	1721	1636	1471	37,297
March	1205	1122	1066	1049	1075	1152	1314	1505	1590	1595	1542	1526	1500	1526	1516	1492	1484	1537	1765	1788	1710	1600	1478	1318	34,455
April	1095	1011	973	961	971	1046	1182	1398	1483	1495	1463	1451	1429	1423	1458	1448	1407	1351	1353	1501	1676	1589	1404	1226	31,794
May	1074	988	946	942	943	979	1147	1358	1410	1429	1417	1413	1409	1416	1471	1425	1395	1345	1313	1360	1562	1574	1395	1219	30,930
June	1146	1064	1004	989	990	1011	1151	1344	1485	1536	1579	1598	1612	1618	1676	1625	1590	1528	1479	1470	1521	1621	1520	1367	33,524
July	1152	1067	1053	1002	979	979	1093	1283	1400	1451	1477	1517	1523	1520	1562	1536	1499	1455	1462	1505	1541	1595	1476	1322	32,449
August	1150	1070	1038	1013	1027	1057	1143	1318	1431	1493	1521	1518	1526	1516	1545	1533	1497	1448	1437	1500	1625	1543	1407	1244	32,600
September	1087	1016	986	962	983	1048	1183	1360	1456	1487	1468	1472	1452	1460	1498	1485	1460	1418	1473	1691	1670	1544	1382	1229	32,270
October	1130	1050	1013	983	993	1049	1199	1362	1476	1562	1592	1580	1557	1522	1526	1496	1485	1496	1645	1716	1636	1556	1419	1307	33,350
November	1219	1140	1092	1061	1078	1152	1330	1510	1605	1652	1660	1651	1645	1675	1667	1636	1743	1869	1837	1780	1726	1627	1527	1374	36,254
December	1352	1264	1203	1173	1197	1285	1490	1693	1823	1871	1861	1850	1842	1884	1889	1895	1989	2037	1991	1945	1899	1814	1722	1568	40,539

Load curves for days in month with highest daily consumption



	1	2	3	4	5	6	7	8	9	10	11	12	13	14	15	16	17	18	19	20	21	22	23	24	Σ
January	1350	1259	1205	1189	1200	1248	1416	1559	1683	1744	1762	1764	1750	1792	1758	1747	1801	1925	1910	1863	1787	1712	1657	1509	38.590
February	1299	1192	1155	1154	1157	1226	1407	1608	1743	1791	1795	1795	1775	1828	1795	1781	1813	1922	1936	1921	1859	1759	1681	1483	38.875
March	1303	1217	1186	1163	1181	1249	1434	1611	1711	1779	1755	1763	1748	1797	1762	1734	1703	1743	1865	1912	1831	1753	1634	1467	38.301
April	1266	1169	1117	1105	1097	1177	1314	1523	1626	1672	1674	1667	1664	1655	1678	1675	1623	1617	1650	1767	1792	1703	1566	1423	36.220
May	1080	995	953	936	935	983	1120	1309	1408	1487	1497	1500	1496	1495	1530	1505	1469	1439	1438	1488	1564	1547	1394	1244	31.812
June	1174	1077	1018	987	997	1019	1154	1359	1485	1553	1582	1608	1622	1625	1663	1640	1593	1533	1499	1485	1513	1631	1530	1374	33.721
July	1204	1114	1092	1044	1016	1016	1138	1335	1478	1564	1617	1675	1695	1685	1716	1678	1630	1587	1578	1613	1644	1669	1526	1403	34.717
August	1260	1160	1106	1091	1058	1064	1167	1354	1473	1559	1613	1667	1702	1718	1756	1748	1704	1668	1663	1692	1739	1760	1641	1501	35.864
September	1041	993	957	951	951	1025	1174	1389	1506	1544	1572	1543	1533	1518	1550	1532	1519	1527	1621	1701	1648	1550	1407	1261	33.013
October	1161	1071	1022	996	1031	1107	1281	1518	1621	1634	1623	1605	1574	1576	1601	1577	1582	1579	1731	1809	1737	1612	1455	1322	34.825
November	1324	1235	1196	1172	1167	1266	1473	1635	1770	1804	1777	1764	1736	1758	1757	1748	1870	1963	1924	1883	1819	1736	1651	1486	38.912
December	1381	1282	1217	1201	1197	1284	1483	1687	1828	1867	1857	1832	1802	1833	1835	1848	1965	2074	2020	1993	1935	1847	1747	1585	40.599

Load curves for days in month with smallest daily consumption



	1	2	3	4	5	6	7	8	9	10	11	12	13	14	15	16	17	18	19	20	21	22	23	24	Σ
January	1432	1.348	1.269	1.209	1.169	1.155	1.185	1.197	1.306	1.403	1.465	1.503	1.506	1.532	1.509	1.507	1.609	1.730	1.711	1.688	1.650	1.586	1.531	1.379	34,579
February	1.258	1.169	1.109	1.090	1.083	1.127	1.127	1.225	1.342	1.491	1.567	1.586	1.589	1.572	1.556	1.571	1.645	1.810	1.846	1.828	1.751	1.661	1.529	1.363	34,849
March	1.139	1.069	1.025	994	1.000	1.015	1.061	1.208	1.362	1.464	1.492	1.494	1.472	1.437	1.386	1.379	1.403	1.486	1.663	1.704	1.654	1.535	1.377	1.235	32,054
April	1.070	982	940	923	913	923	955	1.132	1.288	1.384	1.399	1.387	1.361	1.343	1.316	1.290	1.272	1.258	1.268	1.329	1.557	1.515	1.346	1.163	29,314
May	1.070	987	919	901	893	916	990	1.146	1.260	1.306	1.301	1.251	1.226	1.187	1.176	1.140	1.113	1.102	1.109	1.198	1.416	1.418	1.291	1.142	27,458
June	1.094	1.006	962	932	917	895	942	1.072	1.210	1.345	1.360	1.372	1.362	1.361	1.302	1.285	1.278	1.260	1.260	1.274	1.343	1.470	1.358	1.228	28,888
July	1.143	1.044	981	959	948	928	967	1.083	1.240	1.353	1.401	1.413	1.412	1.403	1.352	1.335	1.292	1.307	1.280	1.314	1.391	1.433	1.333	1.213	29,525
August	1.121	1.063	1.015	992	1.001	995	993	1.135	1.283	1.398	1.439	1.452	1.447	1.413	1.371	1.355	1.315	1.312	1.317	1.394	1.513	1.455	1.299	1.166	30,244
September	1.095	1.037	991	968	965	977	1.001	1.135	1.285	1.373	1.396	1.395	1.391	1.373	1.356	1.320	1.322	1.311	1.362	1.518	1.592	1.456	1.312	1.165	30,096
October	1.187	1.098	1.043	1.015	1.017	1.048	1.099	1.226	1.378	1.461	1.493	1.474	1.443	1.414	1.373	1.371	1.361	1.441	1.678	1.729	1.668	1.546	1.375	1.227	32,165
November	1.142	1.069	1.030	998	1.009	1.043	1.105	1.260	1.371	1.465	1.457	1.469	1.443	1.437	1.398	1.420	1.525	1.706	1.660	1.627	1.553	1.451	1.312	1.174	32,122
December	1.346	1.209	1.153	1.129	1.117	1.156	1.228	1.339	1.526	1.630	1.678	1.679	1.672	1.634	1.627	1.614	1.799	1.906	1.858	1.841	1.794	1.726	1.586	1.445	36,690

SCHEDULED PROGRAMS WITH NEIGHBOURING TSOs

SCHEDULED FLOWS	I	II	III	IV	V	VI	VII	VIII	IX	X	XI	XII	2013
	GWh	GWh	GWh	GWh	GWh	GWh	GWh	GWh	GWh	GWh	GWh	GWh	GWh
BiH <- HR (HOPS)	230,8	124,9	81,3	92,6	92,1	128,9	120,8	103,5	118,7	71,9	29,6	132,5	1.327,4
BiH <- SR (EMS)	14,2	16,5	9,0	5,2	41,5	56,8	62,5	77,0	108,3	95,5	143,8	131,7	762,0
BiH <- CG (CGES)	10,6	3,6	3,6	71,6	115,4	46,4	12,9	33,8	51,8	54,5	25,3	7,7	437,2
(1) Inside	255,6	145,1	93,9	169,4	248,9	232,1	196,2	214,3	278,8	221,9	198,6	271,8	2.526,5
BiH -> HR (HOPS)	285,0	324,5	345,3	367,4	323,9	296,8	216,4	243,8	232,1	252,7	288,2	124,3	3.300,3
BiH -> SR (EMS)	183,6	194,3	259,0	193,7	137,0	104,9	86,7	91,5	44,8	77,5	168,8	156,9	1.698,9
BiH -> CG (CGES)	144,1	161,6	211,5	128,7	104,3	103,7	93,3	67,1	43,0	32,4	50,5	102,7	1.242,8
(2) Outside	612,7	680,5	815,8	689,8	565,2	505,4	396,4	402,4	319,8	362,6	507,5	383,9	6.242,0
(3) Exchange balance (2)-(1)	357,1	535,4	721,9	520,4	316,2	273,2	200,2	188,1	41,1	140,7	308,9	112,1	3.715,5
Balance HR (HOPS)	54,2	199,6	264,0	274,7	231,8	167,9	95,7	140,3	113,4	180,7	258,6	-8,1	1.972,9
Balance SR (EMS)	169,4	177,8	250,1	188,5	95,5	48,1	24,2	14,5	-63,5	-18,0	25,1	25,2	936,9
Balance CG (CGES)	133,5	158,0	207,8	57,1	-11,1	57,3	80,3	33,3	-8,8	-22,1	25,3	95,0	805,7
Transit	93,1	44,8	16,6	78,4	134,4	110,0	64,2	102,9	142,8	96,5	119,2	142,1	1.145,0

PHYSICAL FLOWS IN 2013

PHYSICAL FLOWS	I	II	III	IV	V	VI	VII	VIII	IX	X	XI	XII	2013
	GWh	GWh	GWh	GWh	GWh	GWh	GWh	GWh	GWh	GWh	GWh	GWh	GWh
BiH <- HR (HOPS)	134,7	67,3	87,8	113,0	102,7	63,3	75,0	72,4	92,7	86,5	62,3	168,8	1.126,5
BiH <- SR (EMS)	103,3	77,3	45,5	28,0	48,3	76,8	188,0	181,1	221,4	191,7	174,3	188,1	1.523,9
BiH <- CG (CGES)	34,7	31,6	31,4	72,7	100,8	64,3	35,5	31,2	22,3	26,7	47,5	17,9	516,5
(1) Inside flows	272,7	176,1	164,8	213,7	251,8	204,4	298,5	284,7	336,4	304,8	284,1	374,8	3.166,9
BiH -> HR (HOPS)	350,6	428,6	478,9	471,0	415,7	334,0	269,9	270,9	236,5	334,1	422,6	193,3	4.206,1
BiH -> SR (EMS)	53,6	43,7	73,2	113,0	68,2	41,6	22,5	16,2	23,5	23,6	29,5	29,1	537,7
BiH -> CG (CGES)	228,4	243,4	330,7	159,2	78,3	91,7	203,8	194,6	107,0	87,7	131,0	262,2	2.118,0
(2) Outside flows	632,5	715,7	882,8	743,2	562,2	467,4	496,3	481,7	366,9	445,4	583,0	484,6	6.861,7
(3) Balance (2) - (1)	359,9	539,6	718,0	529,5	310,4	263,0	197,8	197,0	30,5	140,6	298,9	109,8	3.694,9
Balance HR (HOPS)	215,9	361,4	391,0	358,0	313,1	270,7	194,9	198,5	143,7	247,6	360,2	24,5	3.079,6
Balance SR (EMS)	-49,8	-33,6	27,7	84,9	19,9	-35,2	-165,4	-164,9	-197,9	-168,1	-144,8	-159,0	-986,2
Balance CG (CGES)	193,7	211,8	299,3	86,5	-22,5	27,4	168,3	163,4	84,7	61,1	83,5	244,3	1.601,5

Unintentional deviations in 2013

Month	Deviation - deficit			Deviation - surplus			Deviation - TOTAL		
	Max MWh/h	Average MWh/h	Total MWh	Max MWh/h	Average MWh/h	Total MWh	Max MWh/h	Average MWh/h	Total MWh
January	-218	-37	-12.420	244	35	14.310	244	3	1.890
February	-147	-31	-10.985	275	46	15.059	275	6	4.074
March	-187	-50	-20.043	201	47	16.386	201	-5	-3.657
April	-226	-37	-10.881	215	46	19.793	-226	12	8.912
May	-191	-32	-16.280	195	43	10.820	195	-7	-5.460
June	-165	-39	-17.817	115	28	7.686	-165	-14	-10.131
July	-121	-24	-9.824	127	21	7.428	127	-3	-2.396
August	-148	-24	-6.024	130	27	13.726	-148	10	7.702
September	-162	-31	-14.715	112	21	5.237	-162	-13	-9.478
October	-186	-34	-12.253	144	34	13.275	-186	1	1.022
November	-144	-32	-15.279	87	21	4.866	-144	-14	-10.413
December	-101	-28	-11.211	126	28	9.824	126	-2	-1.387
2013	-226	-33	-157.732	275	33	138.410	275	-2	-19.322